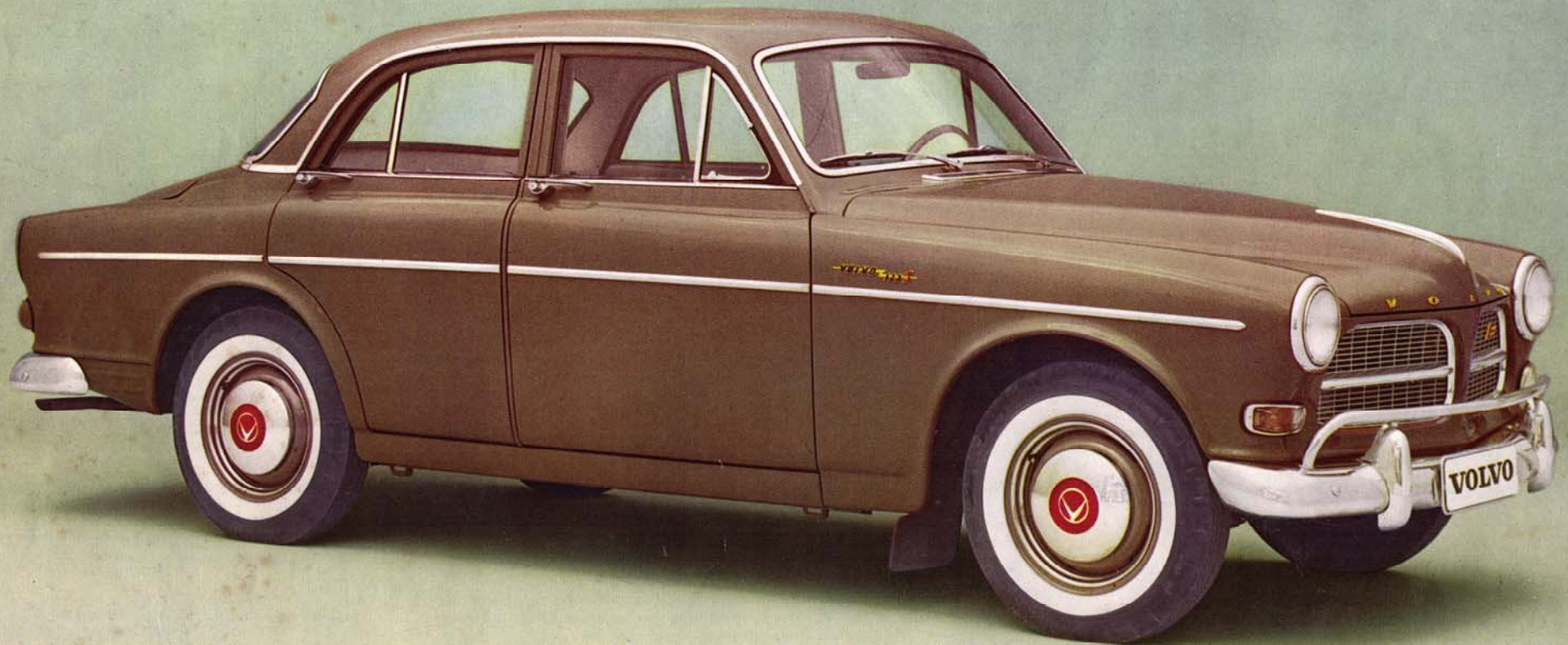
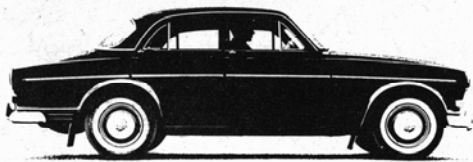


# VOLVO

122 S



# VOLVO 122 S



The Volvo 122 S is a smart car with outstanding performance. The new, powerful engine, the comfort of the interior appointments and the comprehensive standard equipment make motoring a stimulating experience. The Volvo 122 S is very easy to drive and has outstanding roadability. It is an ideal car for those requiring a smart and representative vehicle in which they can drive long distances with the minimum of strain.

Volvo cars are renowned all over the world for their high quality. Their high second-hand value depends on the unvarying precision used by Volvo in the design, selection of material, manufacture and inspection.

The Volvo 122 S with its durable, economical engine, its modern design and high quality is a car its owner can be truly proud of as well as being a car that always attracts great attention.



## Engine 90 b.h.p. SAE

Four-cylinder unit with overhead valves and crankshaft carried in five bearings.

Bore	3.313"
Stroke	3.15"
Capacity	1.78 liters
Compression ratio	8.5:1
Max. output	90 b.h.p. (SAE) at 5000 r.p.m.
Max. torque	105 lb.ft. (SAE) at 3500 r.p.m.
Carburetors	Two SU horizontal carburetors

Full flow oil filter

## Cooling system

Effective radiator. Thermostat-controlled water circulation with by-pass valve.

## Battery

Voltage	12 V
Capacity	60 amp. hours

## Generator

Fan-cooled with automatic voltage control. Capacity . . . . . Max. 30 A

## Starter motor

Output . . . . . 1 h.p.  
The starter is built into the ignition switch which also has an extra position where all the electrical equipment can be used while the engine is not running.

The ignition switch and the ignition coil are connected by means of a tamper-proof armored cable.

## Clutch

Hydraulically-operated 8 1/2" single dry plate clutch

## Transmission

Fully synchronized and quiet running.

Ratios:	1st speed 3.13:1	3rd speed 1.36:1
	2nd speed 1.99:1	4th speed 1:1
		Reverse 3.25:1

## Propeller shaft

Divided for vibration-free operation. The center bearing is mounted in sound and vibration-damping rubber blocks. The center bearing ball bearing requires no servicing.

## Rear axle

Hypoid type  
Ratio . . . . . 4.1:1

## Steering gear

Cam and roller type  
Steering box ratio . . . . . 15.5:1  
Left lock — right lock . . . . . 3 1/4 turns of steering wheel  
Turning circle . . . . . Approx. 32 ft.

## Suspension, front

Independent suspension with coil springs and control arms carried in rubber bushings and ball joints. Stabilizer.

## Suspension, rear

Fixed longitudinal support arms and torque rods. Track bar. Coil springs.

## Shock absorbers

Double-acting, hydraulic telescopic shock absorbers front and rear.

## Footbrakes

Front:  
Hydraulic disk brake of the three-cylinder type. Splash-protected and self-adjusting.

Disks . . . . . 10 7/8" x 1 1/2"  
Brake friction area on each front wheel . . . . . 14 1/2 sq.in.

## Rear:

V-type drum brakes. Hydraulic and self-centering. Brake friction area on each rear wheel . . . . . 32 1/2 sq.in.

## Handbrake

Operates separately on rear wheels. Handbrake lever located beside driving seat.

## Wheels and tires

Pressed disk wheels. All wheels balanced. Tubeless 5.90—15" tires.

## Body

Integral construction, all-welded steel body, fully rust-proofed by modern methods.

## Fuel tank

Located at rear.  
Capacity . . . . . 12 US galls.

## Lighting equipment

Flasher direction indicators front and rear with optical and acoustic warning signals.  
Combined stop and tail lights.  
The inner lighting goes on when either of the front doors is opened.  
Instrument lighting is rheostat-controlled.  
Map-reading lamp.

## Instrumentation

Combined instrument with speedometer, fuel gauge and water temperature gauge.  
Mileometer and trip meter.

Warning lamps for charging, oil pressure, full headlights, direction indicators.

## Other equipment

Horn ring on steering wheel.  
Foot dimmer switch.  
Direction indicator lever with automatic return.  
Heater and ventilation equipment.  
Thermostat-controlled heater. Low-speed fan with two speeds.  
Electric windshield wipers with two speeds and automatic return.  
Nozzles for windshield washer.  
Double padded sun visors.  
Dazzle-free rear view mirror.  
Space available for fitting of radio and loudspeaker.  
Pockets on front doors.  
Cigarette lighter.  
Ashtrays front and rear.  
Tool kit and jack.  
Spare wheel.

## Safety belt attachments

Safety belt attachments for front and rear seat belts.

## Main dimensions and weight

Wheelbase	102 1/8"
Track, front	51 3/8"
Track, rear	51 3/8"
Overall length	175"
Overall width	63 3/4"
Overall height, unloaded	59 1/4"
Curb weight	2400 lb.

The factory reserves the right to modify prices, design and equipment.

AB VOLVO · GÖTEBORG · SWEDEN



RK 618. 3.62. 175.000 (USA) Printed in Sweden, AAA/Hbgs Lito. Endast för spridning utomlands

## Importers

**VOLVO IMPORT, INC.,**  
452 Hudson Terrace, Englewood Cliffs, New Jersey

## Distributors:

**VOLVO DISTRIBUTING, INC.,**  
452 Hudson Terrace, Englewood Cliffs, New Jersey

**SWEDISH MOTOR IMPORT, INC.,**  
3301 West 12th Street, Houston 24, Texas

**VOLVO WESTERN DISTRIBUTING, INC.,**  
12925 Riverside Drive, Sherman Oaks, Calif.

## In Canada:

**VOLVO (CANADA) LTD.**  
Head Office: 440 Comstock Road, Scarborough, Ont.  
Branch Office: 1090 W. Georgia St., Vancouver 5, B. C.